

# FIRST CHOICE IN FLOWING SCREED



## Description

**LAFARGE GYVLON FLOWING SCREED** is a blend of **GYVLON BINDER** and selected aggregates mixed with clean water to produce a flowing pumpable screed, which is ideal for application over both warm water and electric under floor heating systems.

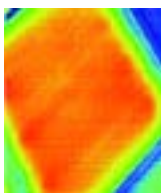
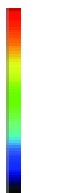
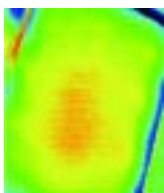
## Key Features

- Produced to a controlled flowable consistency to fully encompass heating pipes.
- Elimination of voids resulting in uniform heat transfer and maximised thermal efficiency of the under floor heating system.
- Reduced screed depth when compared to traditional sand cement screeds minimising heat storage, resulting in a floor which responds rapidly to user requirements.
- Extremely low shrinkage - can not curl and minimises the risk of cracking.
- Does not require reinforcement.
- Increased productivity - 500-1000 m<sup>2</sup> per day can be easily achieved.
- Heating systems can be commissioned in accordance with BS1264:2001-4 clause 4.4, as early as 7 days after application of the screed.
- Minimal thermal expansion (0.012mm/Mk).
- Excellent thermal conductivity (2.2W/Mk).

Sand Cement

Surface Temperature

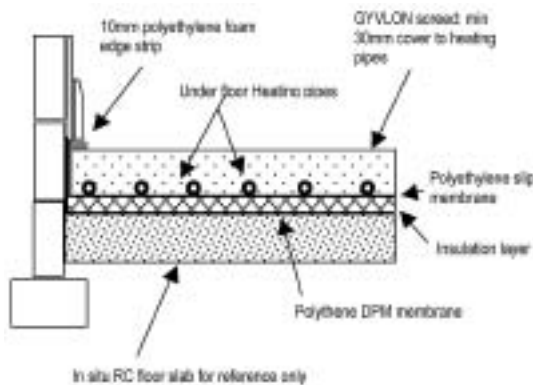
Gyvlon Screed



Temperature across screed surface 80mins after turning underfloor heating on

- Environmentally friendly.
- No curing required.
- Ready for foot traffic in 24-48 hours.

## Typical Schematic Installation



## Key Installation Points

- The area to be screeded must be made water tight to prevent leakage.
- The polythene slip membrane installed over the insulation must be overlapped and sealed to prevent loss of screed.
- Pipes or cables must be securely fixed to prevent floatation and lifting during application of the screed.
- Best practice is to fill pipes prior to application of the screed to check for leaks, this also reduces the risk of pipes floating whilst the screed is being poured.
- Ideal flow 230-250mm measured using the DIN1060 flow ring.
- Minimum cover to pipes or cables must be 30mm.
- If required surface laitance must be removed prior to commissioning of under floor heating.
- Heating should be commissioned in accordance with BS1264:2001-4 clause 4.4 to accelerate force drying of the screed prior to application of the floor finish.
- Screed moisture content must be a maximum of 0.5% and 1.0% respectively prior to application of subsequent impermeable and permeable floor coverings.

LAFARGE GYVLON

**First Choice over Underfloor Heating**

Applicator Data Sheet

Issue 1 07/11/05

Revision 1

Lafarge Gyvlon Ltd  
Europa Boulevard Westbrook  
Warrington WA5 7TN

**LAFARGE**  
GYVLON