

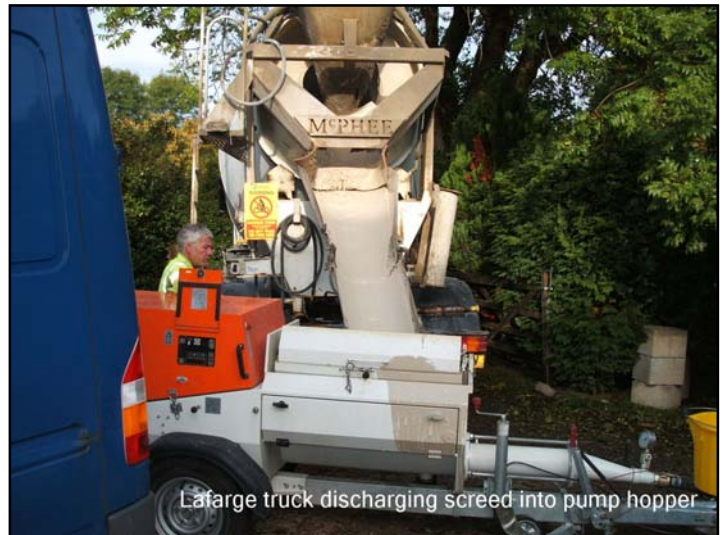
W.Cawrey & Co

Location: Little Marlow, Bucks

Site Details: Self Build, Detached House
Floor Area: 175m²

Job Details: 8m³ of Lafarge Gyvlon Screed delivered from Egham RMX Plant. Pour complete and floor finished within 2 hours with a 3 man team.

Placement: Wormdrive & Stator Pump
Brinkmans FHS 200/3
Dumpy Level & tripods used to get levels.
Lightweight hose easy to handle.
Dapple bar used to finish screed.



Lafarge truck discharging screed into pump hopper



Pouring Gyvlon over underfloor heating



Dappling and finishing of screed